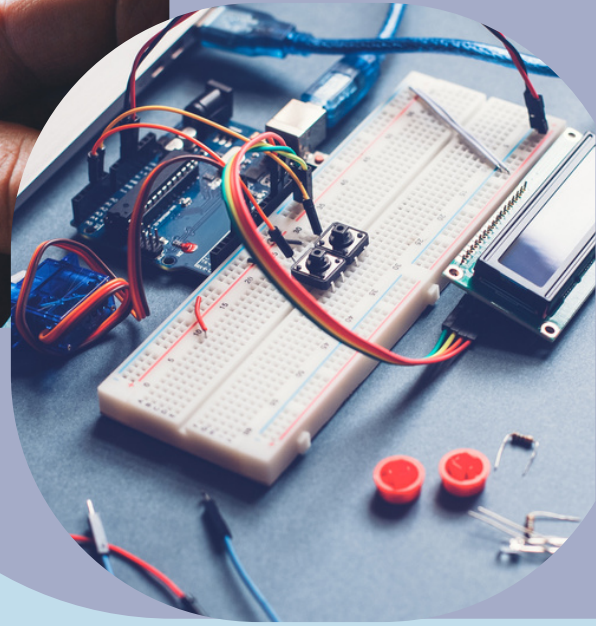
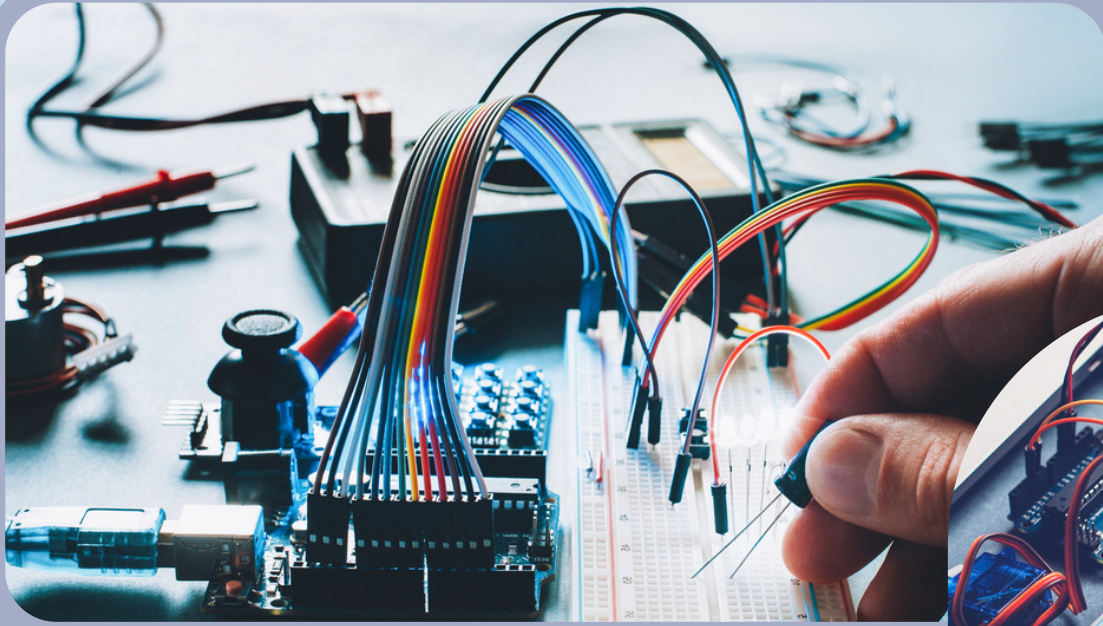




**WHITELINES AUTOMATION INDIA**  
FROM TRAINING TO JOB AND BEYOND



# EMBEDDED SYSTEMS 4.0

A Unique Curriculum Designed for the  
engineering aspirants of ENTC, ETC, EEE  
freshers & relevant experienced professionals



[WWW.WLAI.IN](http://WWW.WLAI.IN)



[INFO@WLAI.IN](mailto:INFO@WLAI.IN)



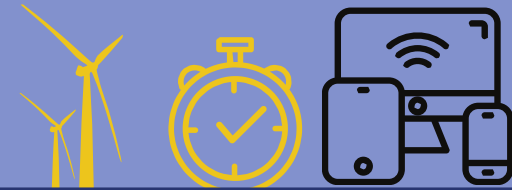
+91 7028777511

**AN ISO 9001 : 2015 CERTIFIED COMPANY**



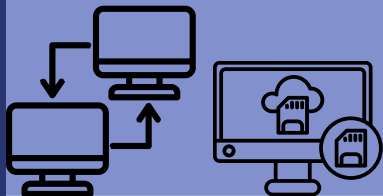
## BASIC ELECTRICAL & ELECTRONICS

- AC AND DC
- VOLTAGE CURRENT
- POWER
- OHMS LAW
- ACTIVE AND PASSIVE COMPONENTS
- VOLTAGE DIVIDER
- CURRENT DIVIDER
- 555 TIMER
- LOGIC GATES
- SENSORS AND TRANSDUCERS



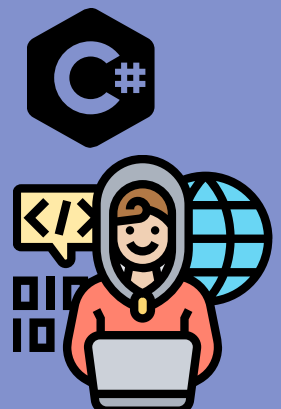
## INTRODUCTION TO EMBEDDED SYSTEMS

- ARCHITECTURES
- COMMUNICATIONS
- BUSES
- SYNCHRONOUS AND ASYNCHRONOUS
- RISC AND CISC
- ENDIANS
- TYPES OF MEMORIES
- APPLICATIONS OF EMBEDDED SYSTEMS

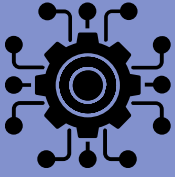


## INTRODUCTION TO C LANGUAGE

- INTRO TO C PROGRAMMING
- OPERATORS AND EXPRESSIONS
- CONTROL STATEMENTS
- LOOP STATEMENTS
- FUNCTIONS
- ARRAYS
- POINTERS
- STRUCTURE AND UNION



## 8051 MICROCONTROLLERS

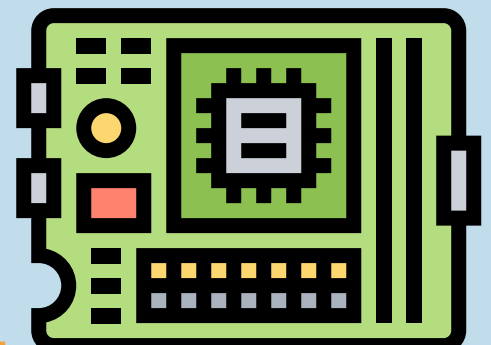
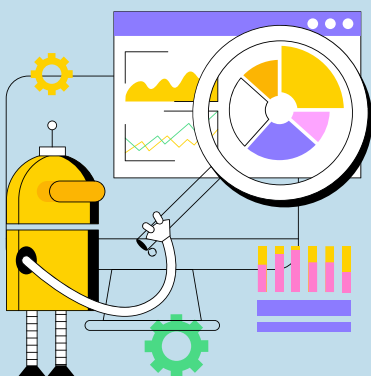
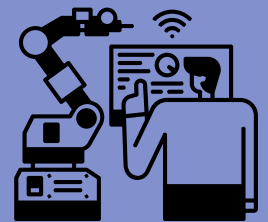
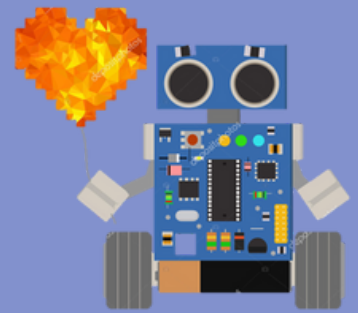


- ARCHITECTURE
- PIN FUNCTIONS
- PROGRAMMING USING KEIL IDE
- UPLOADING FLASH USING USBASP
- INTERFACINGS : LED, SWITCHES, LCD DISPLAY, 7 SEGMENT DISPLAY, STEPPER MOTOR, DC MOTOR
- TIMER
- INTERRUPT

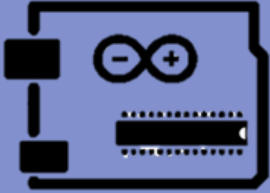


## PIC 18F4580

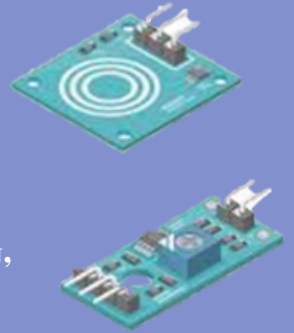
- ARCHITECTURE
- PIN FUNCTIONS
- INTRO TO MPLAB XIDE
- UPLOADING FLASH USING PICKIT 3
- INTERFACINGS : LEDS, SWITCHES, 7 SEGMENT DISPLAY , LCD DISPLAY, DC MOTOR , STEPPER MOTOR.
- ANALOG TO DIGITAL CONVERSION (ADC)
- TIMER
- INTERRUPT
- CAPTURE / COMPARE / PWM (CCP MODULES)
- SERIAL COMMUNICATION: UART, I2C, SPI



## ARDUINO UNO



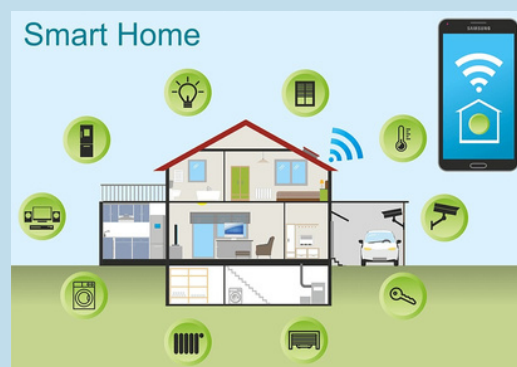
- FEATURES
- PIN FUNCTIONS
- PROGRAMMING USING ARDUINO IDE
- INTERFACINGS : LED, SENSORS INTERFACING, ANALOG INPUT AND OUTPUT, LCD DIAPLAY, SERIALCOMMUNICATIONS, DC MOTOR, 7 SEGMENT DISPLAY, STEPPER MOTOR, SERVO MOTOR



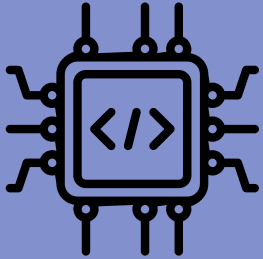
## INTERNET OF THINGS (IOT)



- BASICS OF IOT
- INTRODUCTION TO ESP 8266
- PIN FUNCTIONS
- PROGRAMMING USING ARDUINO IDE
- INTERFACINGS : LED, SENSORS, LED DISPLAY, LCD DISPLAY, DC MOTOR, SERVO MOTOR.
- SERIAL COMMUNICATIONS
- HINGSPEAK
- ADAFRUIT IO
- BLYNK



## ARM CONTROLLER



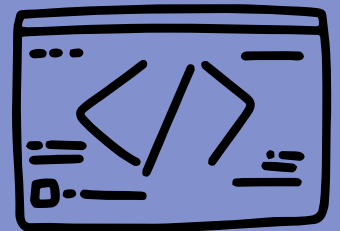
- INTRODUCTION TO ARM
- TYPES OF ARM CONTROLLERS
- FEATURES
- PIN FUNCTIONS
- INTRODUCTION TO STMCUBEIDE
- INTERFACINGS : LED, SENSORS , LCD DISPLAY, 7 SEGMENT DISPLAY, DC MOTOR , STEPPER MOTOR, SFRS, ADC TIMER, INTURRUPT, SERIAL COMMUNICATIONS.



## PYTHON PROGRAMMING



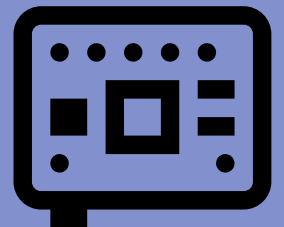
- INTRO TO PYTHON
- PYTHON OPERADORS AND EXPRESSIONS
- CONTROL STATEMENTS
- LOOP STATEMENTS
- ARRAYS
- TUPLE
- FUNCTIONS
- THONNY IDE
- IDLE PYTHON



## RASPBERRY PI

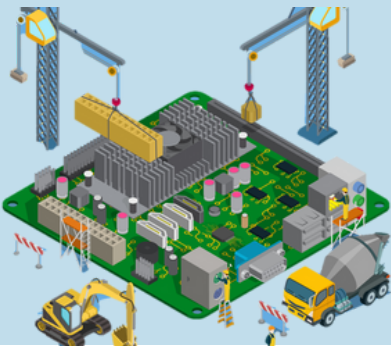


- INTRODUCTION TO RASPBERRY PI
- FEATURES
- PIN FUCTIONS
- ACCESSING GPIO PINS
- DOWNLOADING AND INSTALLING RASPBERRY PI OS
- INTERFACINGS : LED, SENSORS, DC MOTOR, SERVO MOTO  
STEPPER MOTOR.
- CAMERA



## PCB DESIGNING (SOFTWARES)

- **ALTIUM**
- **OrCAD**
- **EAGLE**
- **PROTEUS**
  - **INTRODUCTION TO PCB**
  - **TYPES OF PCB**
  - **MATERIALS OF PCB**
  - **SELECTION OF MATERIALS**
  - **TYPES OF ELECTRONIC COMPONENTS**
  - **PACKAGES OF COMPONENTS**
  - **LAYERS OF PCB**
  - **THROUGH HOLE AND SMD COMPONENTS**
  - **EMI AND EMC**
  - **COUPLING**
  - **POWER PLANES**
  - **EARTHING AND GROUNDING**
  - **IPC STANDARD**
  - **DIY PCB AND MASS PRODUCTION**
  - **METHODS OF EMC**
  - **KEEPOUT REGIONS**
  - **GERBER FILES**
  - **PCB TERMINOLOGIES**
  - **DRC AND ERC**
  - **PART IDENTIFICATION**
  - **REQUIREMENTS FOR COMPONENTS**
  - **DATA SHEET UNDERSTANDING**
  - **PRIMARY AND SECONDARY IDENTIFICATION**



# TRAINING PROGRAMS IN EMBEDDED SYSTEMS

**CERTIFIED IN EMBEDDED SYSTEMS**

**1 MONTH**

**ADVANCE TRAINING**

**2 MONTHS**

**POST GRADUATE DIPLOMA IN EMBEDDED SYSTEMS**

**3 MONTHS**



**Address : No 106, First Floor, Finswell, Sakore Nagar, Viman Nagar, Pune, Maharashtra - 411014**

**Website : [www.wlai.in](http://www.wlai.in)**

**Email : [info@wlai.in](mailto:info@wlai.in)**

**Call : +91 7028777511**

**A RESEARCH & DEVELOPMENT DIVISION OF  
WHITELINES GROUP OF COMPANIES**